



NEWSLETTER – FEBRUARY 2010

2010 CALENDAR OF EVENTS

<p>January 08 Board Retreat St. Martinville</p> <p>09 ANNUAL MEETING ARTWALK Lafayette</p>	<p>February 08 Board Meeting</p> <p>13 ArtWalk Lafayette</p>	<p>March 08 Board Meeting</p> <p>20 Art in the Park Hodges Gardens</p>
<p>April 10 ArtWalk (for Festival International) Lafayette</p> <p>12 Board Meeting</p> <p>21-25 Festival International Lafayette</p>	<p>May 08 ArtWalk Lafayette</p> <p>08 Career Development Workshop Lafayette</p> <p>10 Board Meeting</p> <p>19 Arts Advocacy Day Baton Rouge</p>	<p>June 12 ArtWalk Lafayette</p> <p>14 Board Meeting</p>
<p>July 11 ArtWalk Lafayette</p> <p>13 Board Meeting</p>	<p>August 01 White Linen Night New Orleans</p> <p>08 ArtWalk Lafayette</p> <p>10 Board Meeting</p>	<p>September 11 ArtWalk Lafayette</p> <p>13 Board Meeting</p>
<p>October 02 Art for Arts' Sake New Orleans</p> <p>09 ArtWalk Lafayette</p> <p>09-10 Festival Acadiens et Creoles Lafayette</p> <p>11 Board Meeting</p>	<p>November 08 Board Meeting</p> <p>13 Art Walk Lafayette</p> <p>25-26 LCES New Orleans</p>	<p>December 11 Art Walk 12 X 12 Silent Auction Jefferson Street Market Lafayette</p> <p>13 Board Meeting</p>



Message from the President

Hi there.

What a month. It's been a busy several weeks. Ok. It's been a busy year, so far. I've got news and I think it's all pretty cool.

Most of you have met **Meg Hall** at the LCG on Julia Gallery. Meg is a recent graduate in Fine Arts and her studies include an emphasis on photography. Meg will serve as **Managing Director** and retain her responsibilities at the New Orleans Gallery. Additionally, she will take over marketing elements for the Guild. We're very excited to welcome Meg. Stop by the gallery and say Hi.

Downtown Lafayette is now a Cultural District and that means no Taxes...Well, sort of. The designation as a Cultural District, like the LCG on Julia Gallery in New Orleans, means there are no city or state taxes on handmade items. Tax free in Lafayette, (as of Monday, March 1st), means no State taxes within the Cultural District. There is still a city tax of 4%. It's a start and the board will discuss an idea Kimberly had to cover the 4% city tax and become the "Totally Tax Free Gallery in Lafayette". The big question is "would an additional 4% savings of the city tax close the sale?" Maybe, maybe not. And it's 4% that has to come out of a pocket somewhere. Kimberly thinks we would generate additional sales, enough to cover the 4%. I tend to agree, but after working on the budget and numbers for the grants, it's a decision that needs to be made with resolve. So, just a parenthetical question...would you be willing to give up 2% on your art, and the Guild cover the other 2%? At Sans Souci only. It would be a bookkeeping challenge, but it's an option. That means a commission of 58%. In a tough economy, every penny counts. The board will meet on the 8th and this will be on the agenda. Comments? Anyone?

Got a call about a magazine with a bunch of Guild members advertising in it. "What's that all about?", she said. Well that's the **Gallery Insider Magazine** that was just released last week in the "Louisiana Life" latest edition. All Guild members had a chance to join in the co-op ad. I think we only had a dozen participants, but the Ad looks great. Very professional and Denise Landry deserves a 'atta boy!

The 4 pages in the center of the magazine are 'Guild' members, and each member who participated received additional copies of the edition for personal use. You can pull the center pages and it's like a catalog for the Guild. Hopefully we will do this again in the next edition and have more participation.

Got a post from Jo O'Quinn from the **Natchitoches** area. You'll remember she was a board member and very involved with the Guild before becoming ill. Jo wanted me to pass on a "howdy" from her to all. Jo and Deb have done some amazing things with the Natchitoches artists and their Gallery on Front Street. Best to you all in NSU country.

And some housecleaning items...If you exhibited in the **Alexandria Museum of Art show** in January, your items have been returned to Sans Souci. Please pick them up or let Kimberly know to add the items to stock. There is absolutely NO storage at SS. Period. Don't forget to stock the LCG gallery locations...and that includes BARNWELL in Shreveport, RIVER OAKS in Alex, LCG ON JULIA, and of course, SANS SOUCI. All you need is your inventory list and an appointment. Phone numbers for all locations and email addys are online at the Guild website, www.LouisianaCrafts.org.

If you've not paid your dues, you're late. If you chose not to renew your membership your items will be removed from stock at all locations. You will need to make arrangements to pick up your stock. Contact the gallery person at each location to schedule your pickup. I thank you all for being a part of the LCG and all the opportunities the Guild affords.

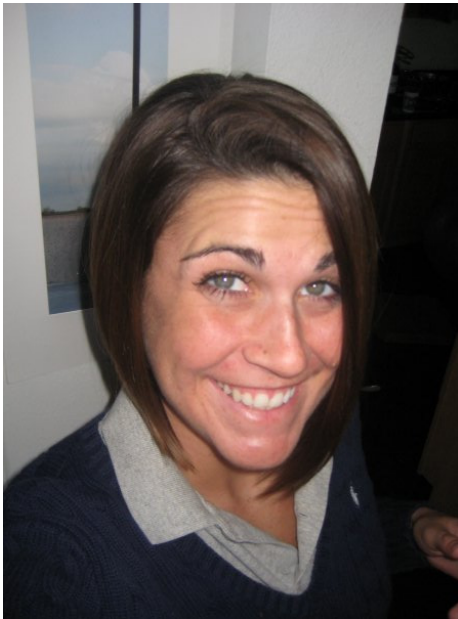
WHOOOOO DATTTTTTTTTT !!! What a season and what a game! I was really lucky and got to experience the event in Miami. Two days before the game, the four of us went to South Beach to see the party that moved to the streets...then to Fort Lauderdale for the fifty minute fireworks display. It was pretty amazing. Saints fans were decked out in all their finery. Colts fans walked around in their white jerseys with blue lettering...and that's all they did. Colts don't know how to party. (Just my observation.) Miami and Ft. Lauderdale cities did away with their open container laws for 5 days because they could not arrest all the Saints fans. I think that's just smart government. Anyway, it was an experience of a lifetime. I know the accompanying snows we've all seen over the past weeks have something to do with "hell freezing over". I guess it's just the price you pay for being "Champions".



I like what Annette Aucoin says, "make something beautiful today!" I leave you with that thought as I head off to work on more grants. They're due tomorrow in Baton Rouge and I have plenty to do before they're ready. More about the grant status next month....

Doug Stannard
President

Introducing Meg Hall, Managing Director



Louisiana Crafts Guild welcomes Meg Hall as the new Managing Director. Meg will be at the Julia Street gallery managing the gallery and taking over marketing efforts for the guild.

LCG WEBSITE SUPPORT

If you have questions about website performance or usage, please contact our new website chair person, Zé daLuz by email at tech@louisianacraftsguild.org.

New Julia Street Sign



A new sign was recently installed at the LCG on Julia Street. The sign was a collaborative effort by Ellen Caillouet (glass), Miles Peterson (wood), Kelly Guidry (metal), Liz Brazelton (mosaic), Emma Hughes (weaving) and Doug Stannard. Thanks to all who helped with the project.

Workshops or Demo at CMA

Summer seems like a long way away, but it is approaching fast. As part of an agreement with the Children's Museum of Acadian, we need 8 artists to help with our part of the agreement, by providing demonstrations or workshop for the museum. The museum has requested help with their summer program, if you are available and can help, please volunteer or for more information contact Emma at 337 527 5328 or email emhughes13@bellsouth.net.

Emma Hughes
Volunteers Committee



Standards Committee

Welcome to new members approved at the January standards review:

Pamela Conway Caruso
mixed media/printmaking
New Orleans

Bonnie Miller
metal/jewelry
New Orleans

Simone Palmer
metal/pmc jewelry
Lafayette

David Ellzey
clay
Washington

Valerie M. Graham

mixed media/gourd masks
New Iberia

The members of the standards committee are currently reviewing and revising the LCG criteria guidelines for reviewing applicants artwork for consideration for membership. All changes should be complete in a couple of months.

The next jury review will be held in May.

If you are up for your third year review you will receive a notice soon.

Bruce Gauthier
Standards Chair

Art Affaire in the Garden

The Barnwell Center will begin hosting the arts market, Art Affaire in the Garden, again on Saturday March 20, 2010 from 10am to 3pm. Thank you to you all for participating in the arts market last year and we hope that you will continue to participate this year. We hope to create more of a presence this year on the riverfront and build upon the success of last year's Art Affaire. Attached is a copy of the application and the call to artists. Please pass the information on to any artists who would like to participate.

The plan is to hold the arts market once a month until the Farmer's Market starts in June. Then we can begin to have the market every weekend.

Please contact me if you have any questions or concerns. Also, please let me know if you would like to participate in the market on March 20.

Thank you,
Whitney Lary
Gallery Manager
'the store' at Barnwell Center



* * * * *

LOUISIANA CRAFTS GUILD GALLERIES

Support the Crafts Guild Galleries by selling your work there. Here's the contact information for our galleries:

Sans Souci Fine Crafts Gallery, Lafayette

Kimberly Jones- Gallery Manager
219 East Vermilion Street
Lafayette, LA 70501
337-266-7999

LCG Gallery on Julia Street, New Orleans

Meg Hall - Gallery Manager
608 Julia St.
New Orleans, LA 70130
504-558-6198
Gallery email: lcgonjulia@att.net

LCG Exhibit at the Vault, Lafayette

Acadiana Center for the Arts
101 W. Vermilion St., Lafayette, LA 70501
For more information call Bobby Bender at 337-233-7060
Tuesday-Friday 10 am to 5 pm, Saturday 10 am to 6 pm
Closed Sundays, Mondays and all major holidays
Admission to the Vault free, fee is charged other exhibits.

"the store" at the Barnwell Center, Shreveport



Whitney Lary- Gallery Manager
601 Clyde Fant Parkway
Shreveport, LA 71101 (318) 673-7703
(318) 673-7707 - Fax
www.barnwellcenter.com

LCG Gallery at River Oaks Square Arts Center, Alexandria

River Oaks Arts Center, Bolton House Gallery
1330 Main Street
Alexandria, LA 71301
Rachel Dauzat, Executive Director
Preston Gilchrist, Donna Autrey

* * * * *

FEATURES AND EVENTS

Red Stick Farmers Market/Arts Market

First Saturday of each month, downtown Baton Rouge.
Contact: Katherine Scherer Kathy@acgbr.com or
225-344-8558

Bywater Art Market

Third Saturday of each month in New Orleans
Contact: Blake Vonder Haar
504-944-7900, bywaterartmarket@aol.com
www.bywaterartmarket.com

New Orleans Arts Market

Last Saturday of each month in Palmer Park
Contact Gene Meneray
Director, Arts Business Program
Arts Council of New Orleans
GMeneray@artscouncilofneworleans.org
Telephone-504.523.1465, fax-504.529.2430
Direct Line 504.218-8869

Louisiana Crafts Guild
 219 East Vermillion Street
 LA 70501



Telephone: 337-266-7999
 Facsimile: 337-266-7999 Lafayette,
 www.louisianacrafts.org

2009 Louisiana Crafts Guild Officers & Board Members

Title	First	Phone	E-Mail
President	Doug Stannard	337-537-5887	doug@krok.com
Vice President	Ellen Caillouet	337-237-5977	absolutartglass@bellsouth.net
Secretary	Lynn Langhoff	337-235-8223	lslanghoff@yahoo.com
Treasurer	Luann Duhon	337-989-0293	figpot@lusfiber.net
Standards Chair	Bruci Gauthier	337-845-5252	bruciredrim@yahoo.com
Past President	Suzanne Juneau	337-873-6295	s@psjuneau.com
Board Member, Central LA Liaison	Liz Brazelton	318-487-4968	ehbraz@aol.com
Board Member, NW LA Liaison	Susan Breeland	318-326-5643	susanbreeland@yahoo.com
Board Member, Webmaster	Ze' daLuz	504-947-8884	sales@knitzzy.com
Board Member, Membership Chair	Shirley De'Vard	225-769-0510	sdevard@bellsouth.net
Board Member	Michelle Fontenot	337-948-0978	michethis@hotmail.com
Board Member	Emma Hughes	337-527-5328	emhughes13@bellsouth.net
Board Member	Elaine Hurst	337-981-8620	elainehurst@gmail.com
Board Member	Mary Morgan	337-643 -1492	gutestudio@kaplantel.net
Board Member	Annie Odell	504-737-5671	jnyguitar@aol.com
Board Member	Miles Peterson	337-856-9112	cypresscreations@aol.com

* * *

*Newsletter Production
 Editor: Lynn Langhoff*